



Certificate of Analysis

Rebel Chef

Order# 1086

Sample# 8861

Sample Received: 07/05/2025

Report Created: 07/08/2025

Batch/Lot# RCPM063025

Peach Melba Tincture

Edible, Tincture, Hemp Cannabis



Summary

Test

Potency

Microbiological (Quantitative)

Homogenization

Date Tested

7/7/2025

Not Tested

7/7/2025

Result

Tested

N/A

Tested

Cannabinoids (ECL-LC-201)

This test method has been validated and performed according to the principles and measurements of ISO 17025:2015.

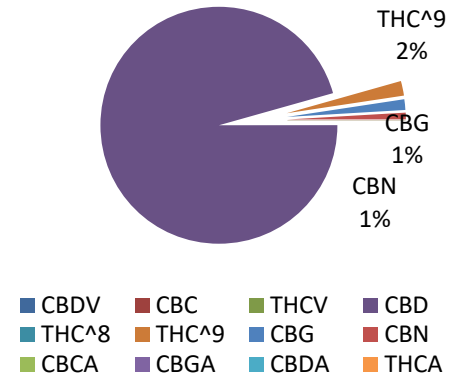
19.8 mg/unit
Total THC

959.1 mg/unit
Total CBD

Ratio of Cannabinoids

| Analyte | LOQ (%) | Mass (%) | Mass (mg/g) |
|--------------|---------|----------|--------------|
| CBDV | 0.08% | 0.00% | 0.0000 mg/g |
| CBC | 0.08% | 0.00% | 0.0000 mg/g |
| THC-V | 0.08% | 0.00% | 0.0000 mg/g |
| CBD | 0.08% | 3.20% | 31.9700 mg/g |
| THC^8 | 0.08% | 0.00% | 0.0000 mg/g |
| THC^9 | 0.08% | 0.07% | 0.6600 mg/g |
| CBG | 0.08% | 0.05% | 0.4900 mg/g |
| CBN | 0.08% | 0.03% | 0.3100 mg/g |
| CBCA | 0.08% | 0.00% | 0.0000 mg/g |
| CBGA | 0.08% | 0.00% | 0.0000 mg/g |
| CBDA | 0.08% | 0.00% | 0.0000 mg/g |
| THCA | 0.08% | 0.00% | 0.0000 mg/g |
| Total | | 3.34% | 33.4300 mg/g |

CBD
96%



Unit Volume (ML) = 30

Total THC = THCa * 0.877 + ^9-THC

Total CBD = CBDa * 0.877 + CBD

LOQ = Limit of Quantitation; The reported result is based upon sample weight; unless otherwise stated all quality control samples performed within specifications established by the laboratory in accordance with Texas state law.

Measurement of Uncertainty (MOU) for ^9-THC is calculated to be +/- 0.05%

404 N Whitt Street, Unit 2
Oakwood, TX 75855
817-357-6582
www.ecltesting.com

Matthew O. Madison

Matthew Madison
President

ND = Not Detected; NR = Not Reported

This product has been tested by ECL Testing, LLC using valid testing methodologies and a quality system as required by state law. Values reported relate only to the product tested. ECL Testing, LLC makes no claims as to the efficacy, safety or other risks associated with any detected or non-detected levels of any compounds reported herein. This Certificate shall not be reproduced except in full, without the written approval of ECL Testing, LLC.