



# Certificate of Analysis

Rebel Chef

Order# 1097

Sample# 8870

Sample Received: 09/13/2025

Report Created: 09/19/2025

Batch/Lot# RCMB080825

## Mint Black Pepper

Edible, Tincture, Hemp Cannabis



### Summary

#### Test

Potency

Microbiological (Quantitative)

Homogenization

#### Date Tested

9/18/2025

Not Tested

9/18/2025

#### Result

Tested

N/A

Tested

## Cannabinoids (ECL-LC-201)

This test method has been validated and performed according to the principles and measurements of ISO 17025:2015.

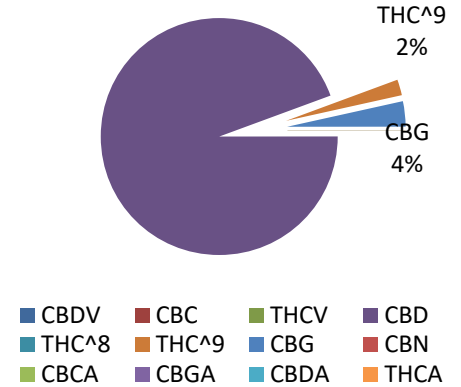
11.22 mg/unit  
Total THC

490.44 mg/unit  
Total CBD

### Ratio of Cannabinoids

Analyte	LOQ (%)	Mass (%)	Mass (mg/g)
CBDV	0.08%	0.00%	0.00 mg/g
CBC	0.08%	0.00%	0.00 mg/g
THC-V	0.08%	0.00%	0.00 mg/g
CBD	0.08%	0.82%	8.17 mg/g
THC^8	0.08%	0.00%	0.00 mg/g
THC^9	0.08%	0.02%	0.19 mg/g
CBG	0.08%	0.03%	0.30 mg/g
CBN	0.08%	0.00%	0.00 mg/g
CBCA	0.08%	0.00%	0.00 mg/g
CBGA	0.08%	0.00%	0.00 mg/g
CBDA	0.08%	0.00%	0.00 mg/g
THCA	0.08%	0.00%	0.00 mg/g
<b>Total</b>		<b>0.87%</b>	<b>8.6610 mg/g</b>

CBD  
94%



Unit Volume (ML) = 60

Total THC = THCa \* 0.877 + ^9-THC

Total CBD = CBDa \* 0.877 + CBD

LOQ = Limit of Quantitation; The reported result is based upon sample weight; unless otherwise stated all quality control samples performed within specifications established by the laboratory in accordance with Texas state law.

Measurement of Uncertainty (MOU) for ^9-THC is calculated to be +/- 0.05%

404 N Whitt Street, Unit 2  
Oakwood, TX 75855  
817-357-6582  
[www.ecltesting.com](http://www.ecltesting.com)

*Matthew O. Madison*

Matthew Madison  
President

ND = Not Detected; NR = Not Reported

This product has been tested by ECL Testing, LLC using valid testing methodologies and a quality system as required by state law. Values reported relate only to the product tested. ECL Testing, LLC makes no claims as to the efficacy, safety or other risks associated with any detected or non-detected levels of any compounds reported herein. This Certificate shall not be reproduced except in full, without the written approval of ECL Testing, LLC.